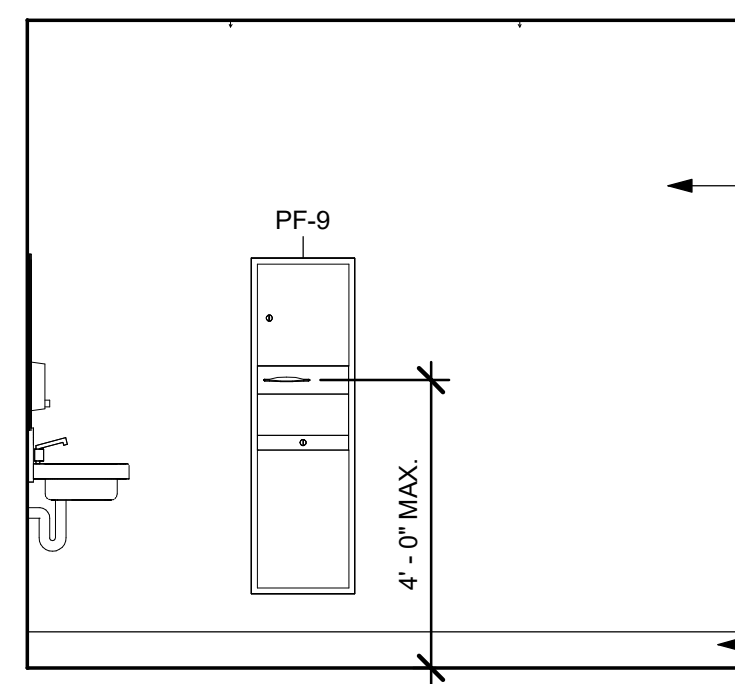
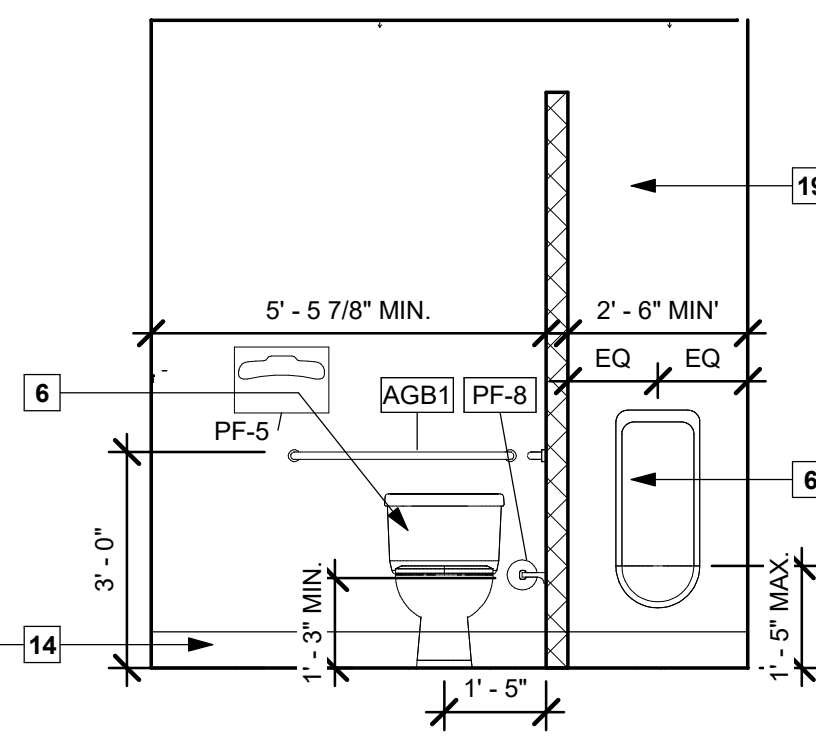


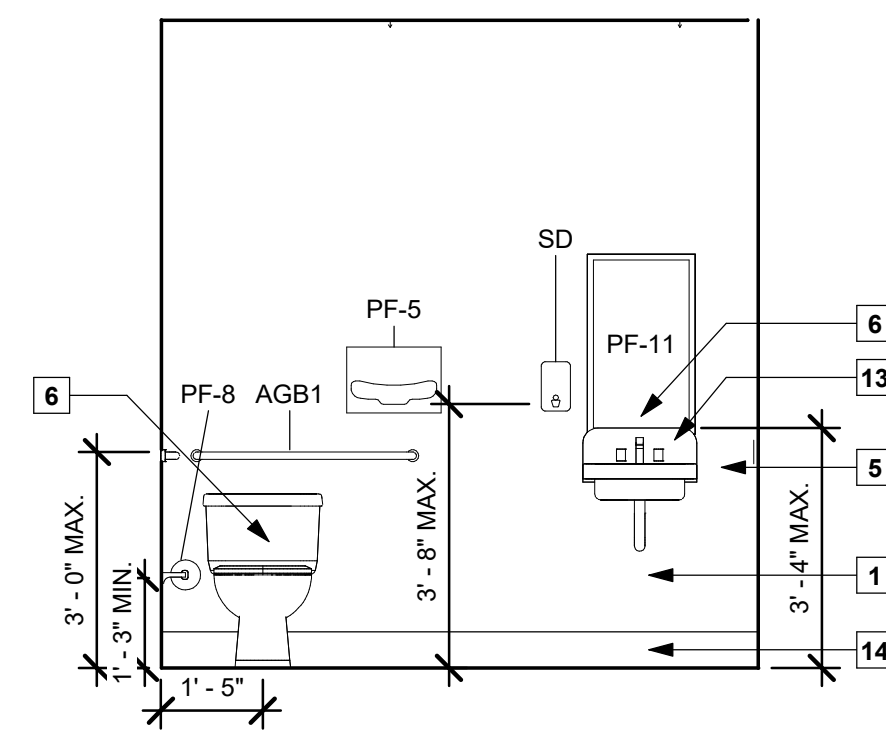
102 - M. R.R. NORTH
3/8" = 1'-0"



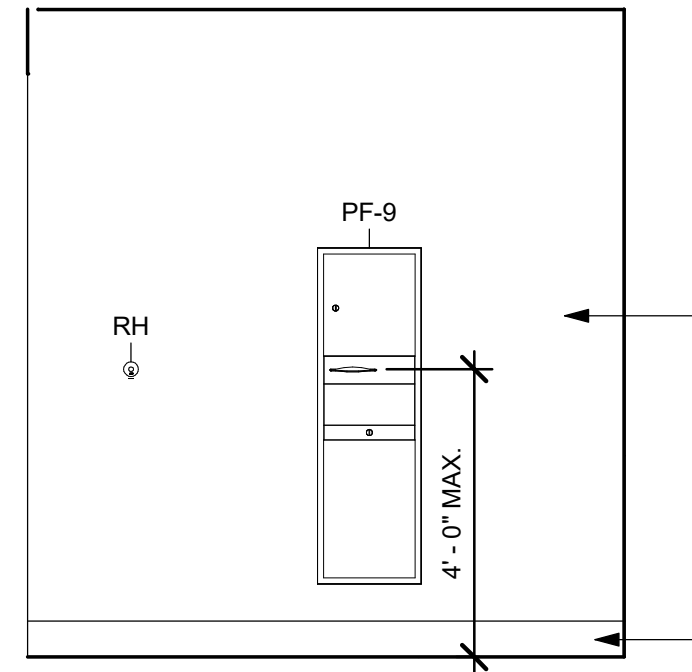
102 - M. R.R. EAST
3/8" = 1'-0"



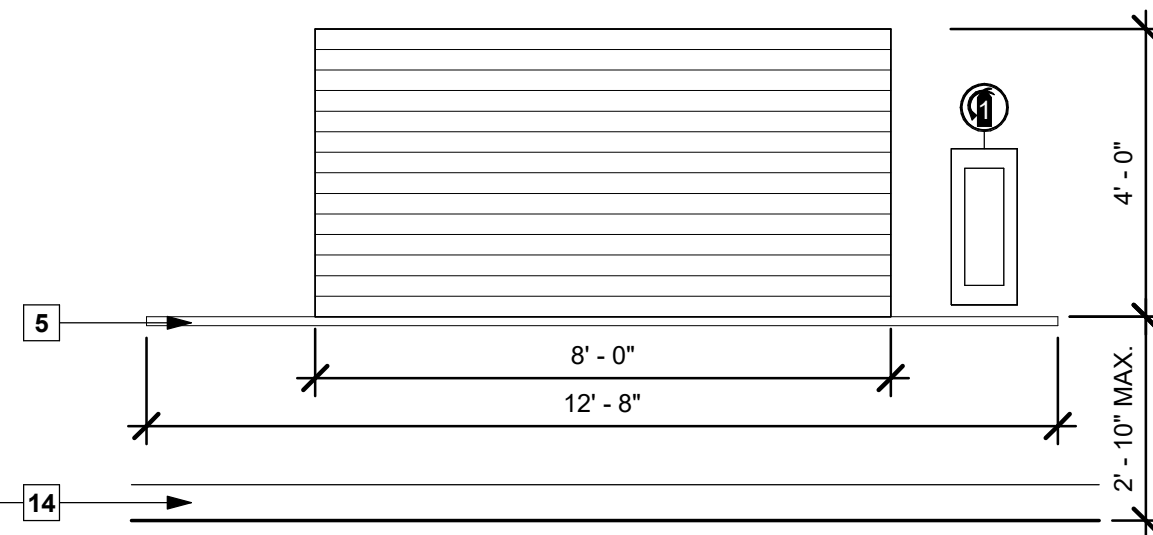
102 - M. R.R. SOUTH
3/8" = 1'-0"



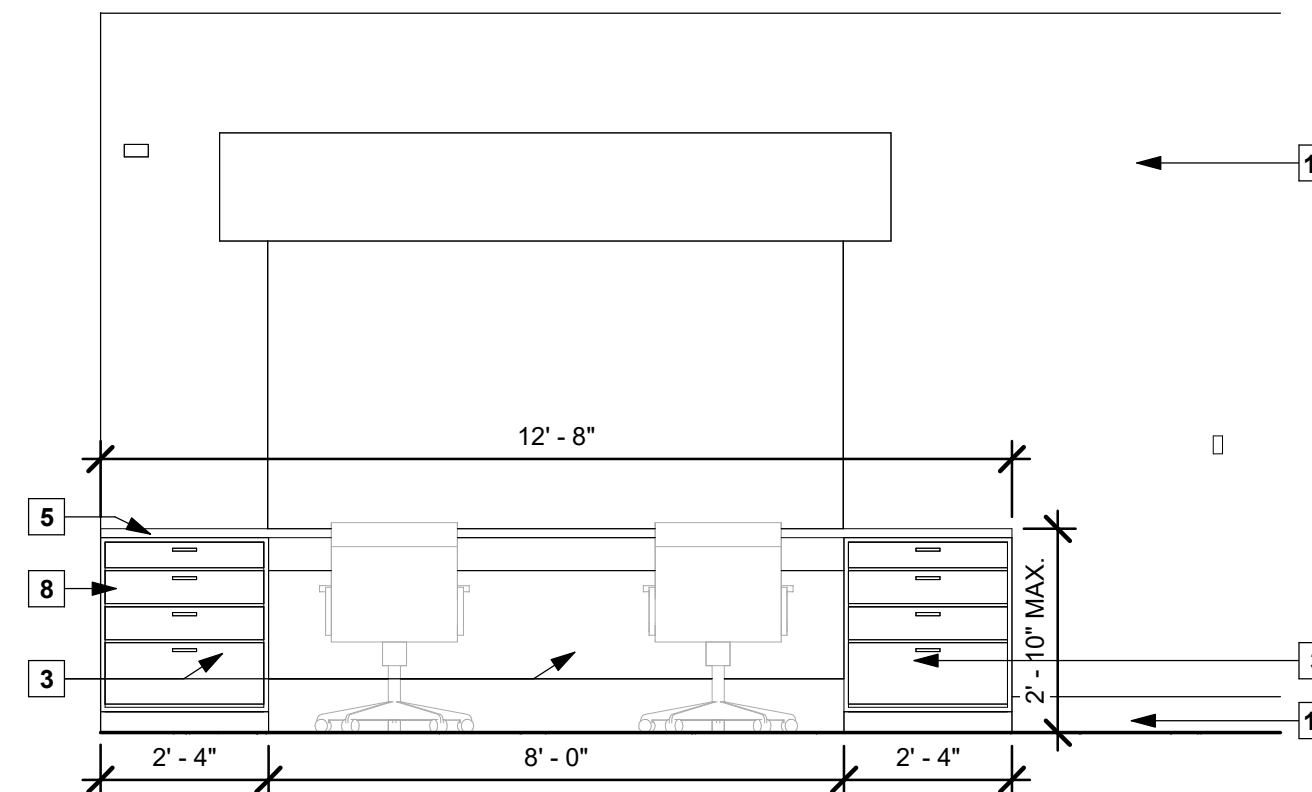
103 - W. R.R. SOUTH
3/8" = 1'-0"



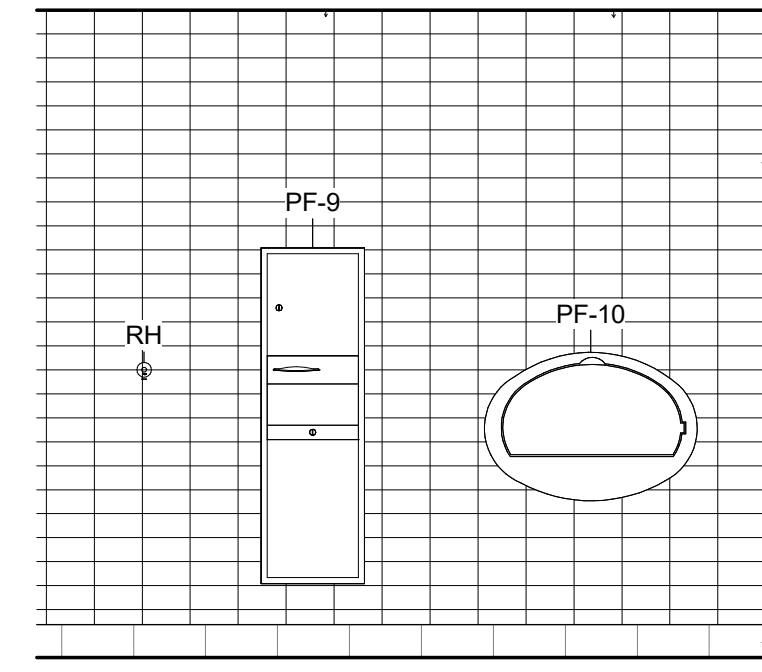
103 - W. R.R. NORTH
3/8" = 1'-0"



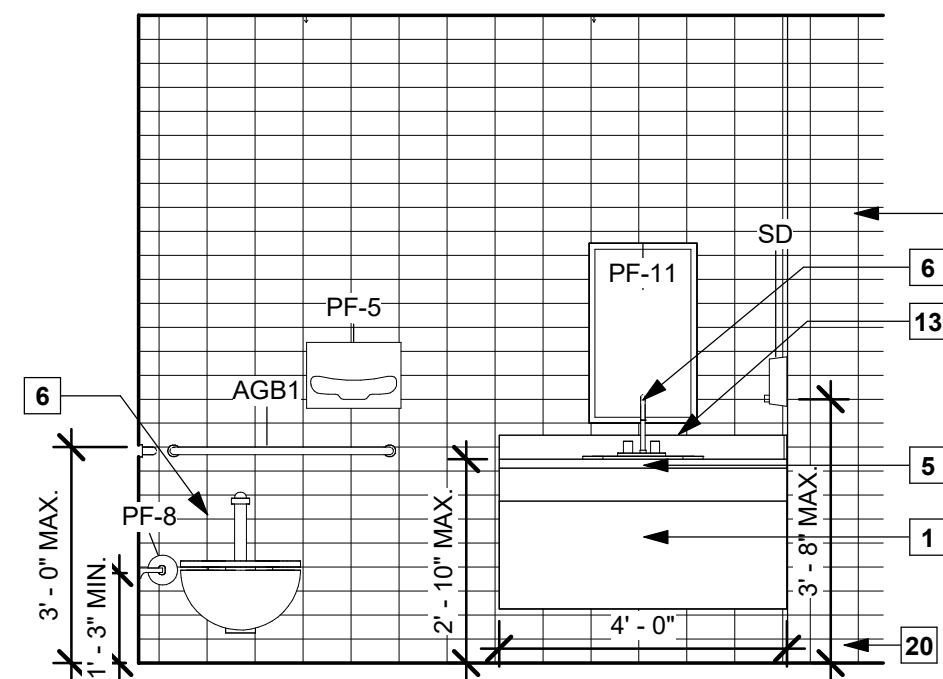
108 - TECH PARTS CTR NORTH
3/8" = 1'-0"



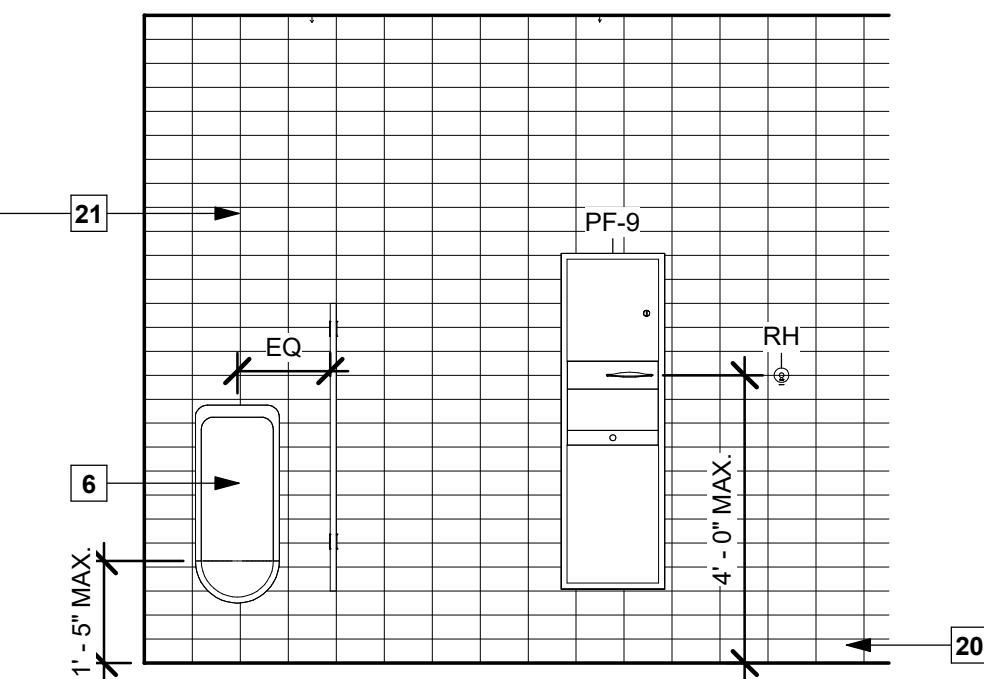
108 - TECH PARTS CTR SOUTH
3/8" = 1'-0"



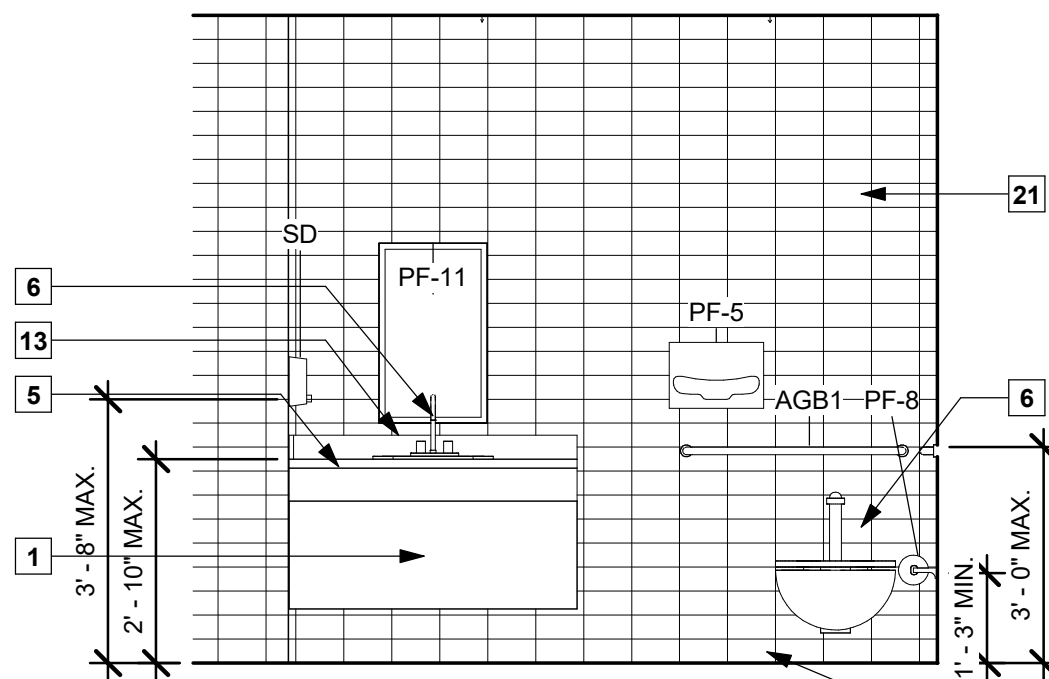
113 - W. R.R. SOUTH
3/8" = 1'-0"



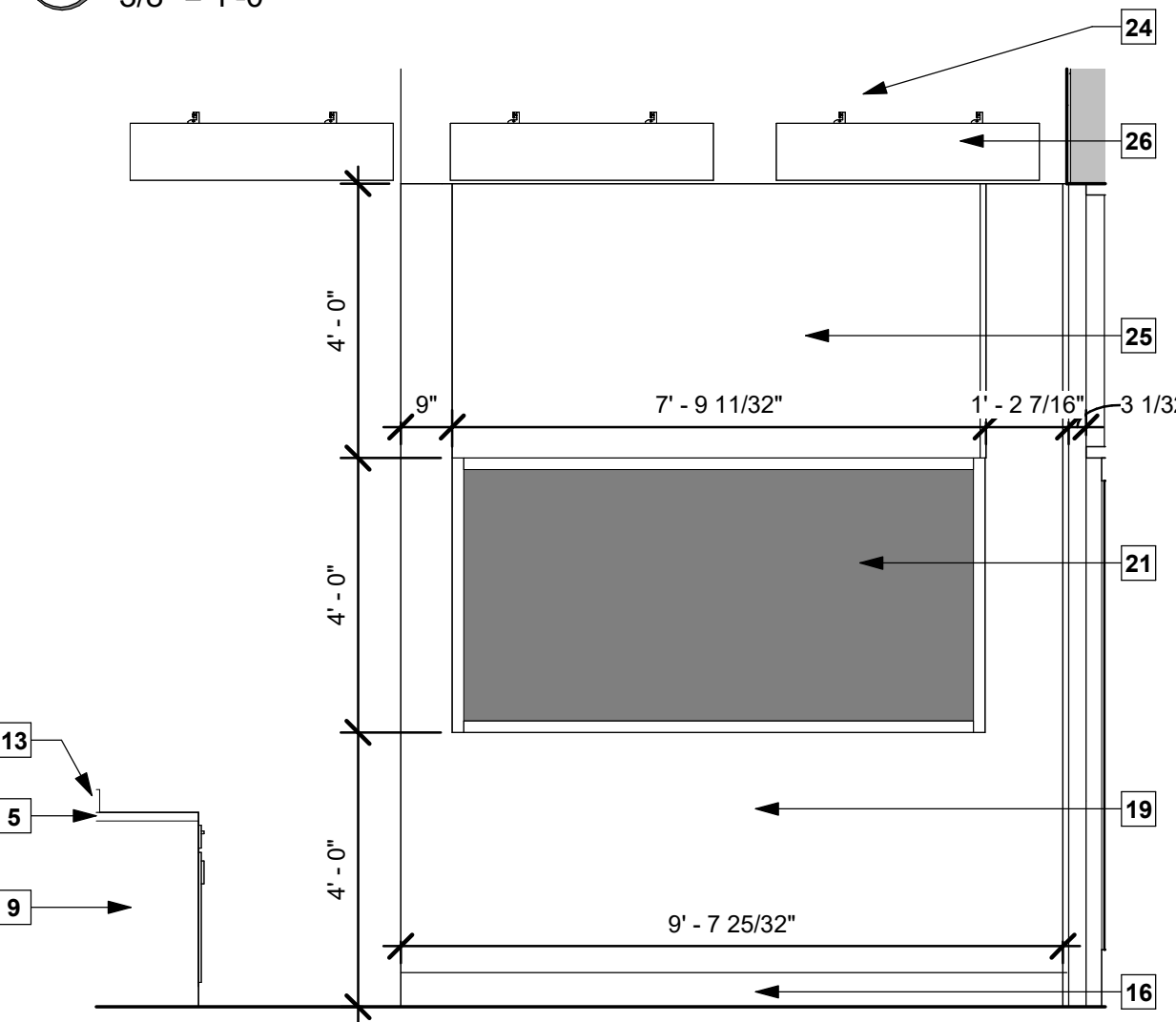
113 - W. R.R. NORTH
3/8" = 1'-0"



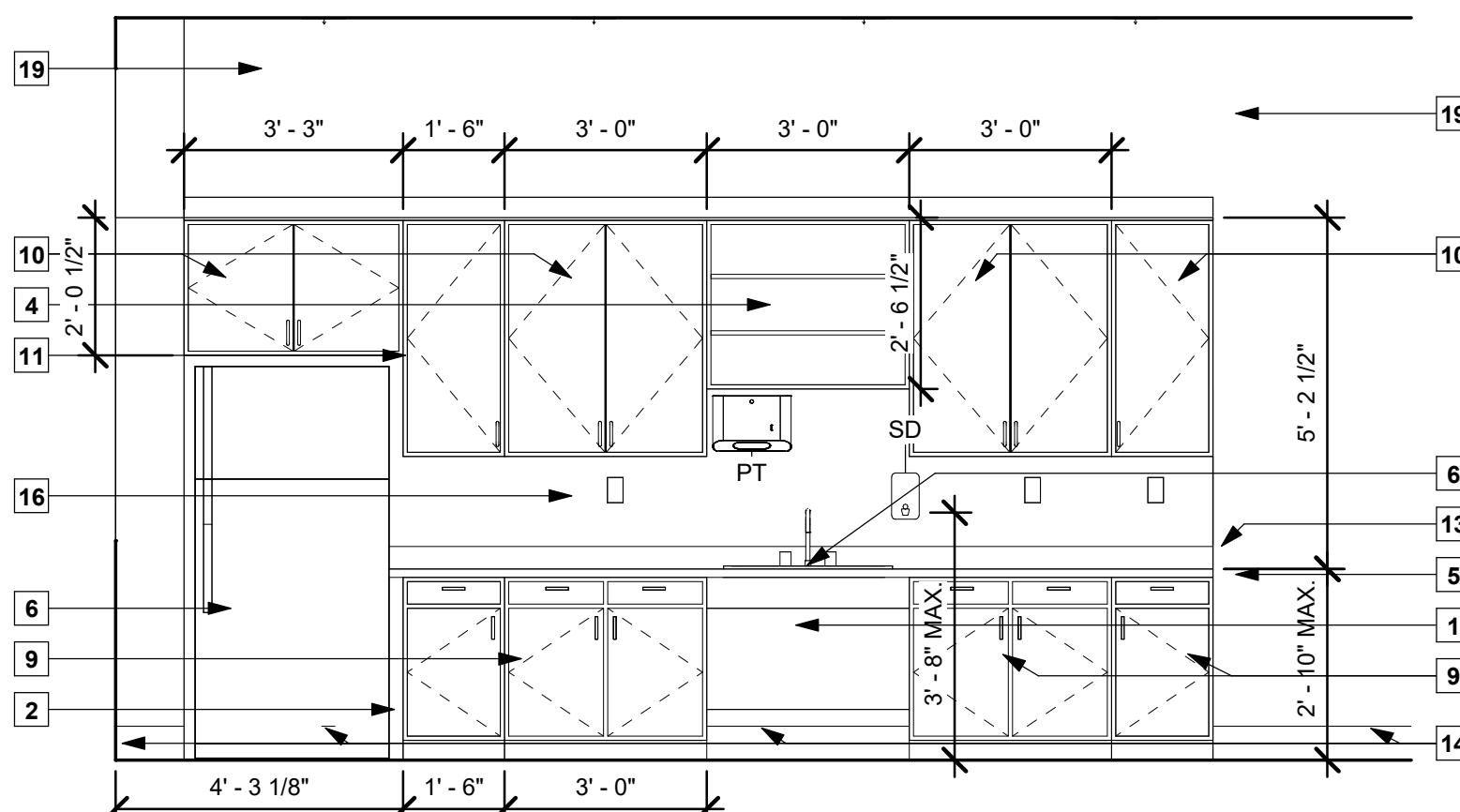
114 - M. R.R. NORTH
3/8" = 1'-0"



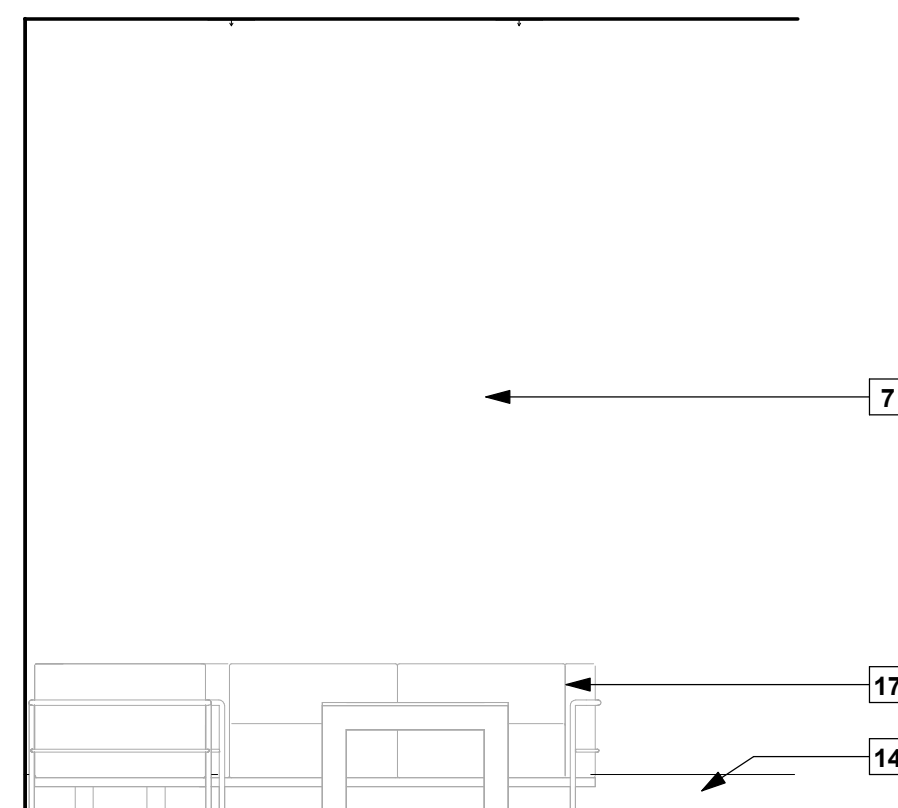
114 - M. R.R. SOUTH
3/8" = 1'-0"



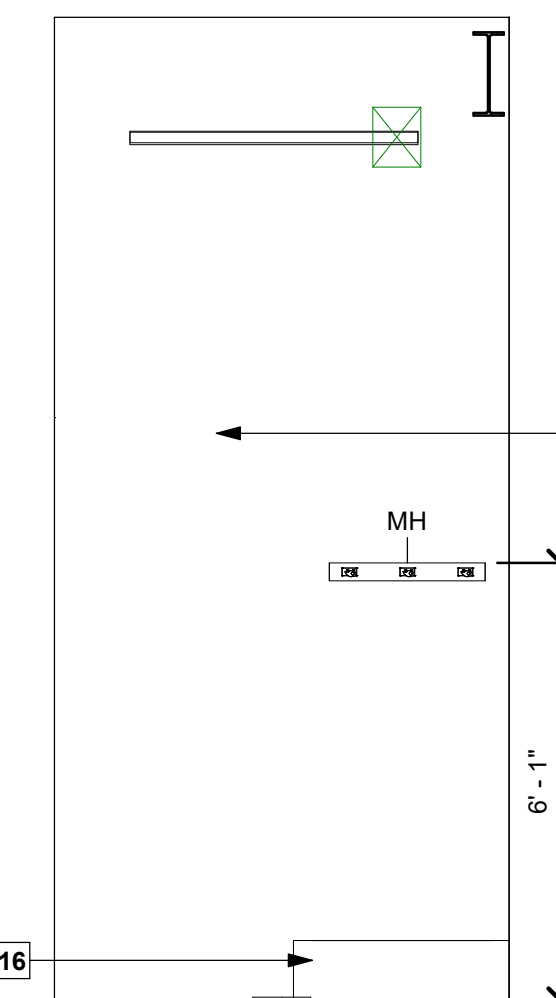
115 - SERVICE WRITERS
3/8" = 1'-0"



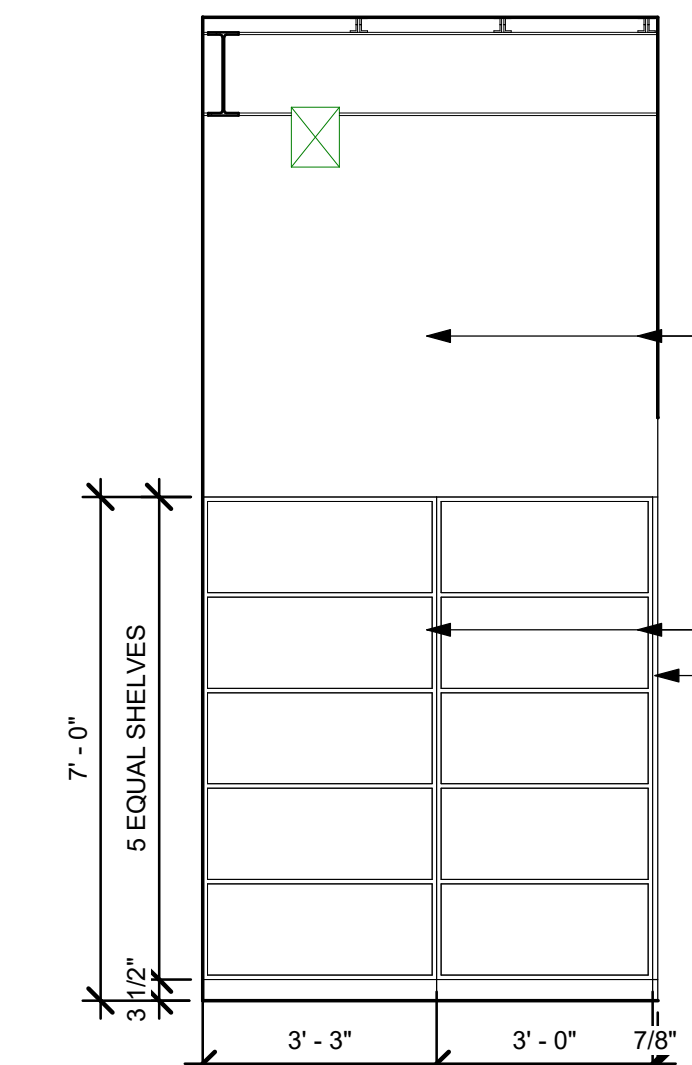
117 - BREAKROOM SOUTH
3/8" = 1'-0"



117 - BREAKROOM @ NORTH LOUNGE
3/8" = 1'-0"



120 - JANITOR NORTH
3/8" = 1'-0"



120 - JANITOR SOUTH
3/8" = 1'-0"

KEYNOTES TO SHEET

1. ADA SINK BASE. SEE MILLWORK SECTIONS.
2. SINGLE DOOR, SINGLE DRAWER BASE CABINET, SEE MILLWORK SECTIONS.
3. 4 DRAWER BASE. SEE MILLWORK SECTIONS.
4. OPEN SHELF UPPER CABINET, SEE MILLWORK DETAILS.
5. 4MM COUNTERTOP AS SELECTED.
6. APPLIANCES SELECTED BY OWNER, INSTALLED BY CONTRACTOR.
7. WALL MOUNTED TV, AS SELECTED BY OWNER.
8. FILLER BASE CABINET TO MATCH CABINETS.
9. DOUBLE DOOR, DOUBLE DRAWER BASE CABINET, SEE MILLWORK SECTIONS.
10. DOUBLE DOOR UPPER CABINET, SEE MILLWORK SECTIONS.
11. SINGLE DOOR UPPER CABINET, SEE MILLWORK SECTIONS.
12. FILLER UPPER CABINET TO MATCH CABINETS.
13. PROVIDE BACKSPLASH RETURN ANYWHERE A WALL IS.
14. WALL BASE MOLDING AS SPECIFIED.
15. SEE CEILING PLAN AS SPECIFIED.
16. SEE MEP.
17. FURNITURE PROVIDED BY OWNER, NIC.
18. 3/4" PLYWOOD SHELVING, PAINT AS DIRECTED.
19. WALL FINISH AS SCHEDULED.
20. CERAMIC COVE / BULLNOSE BASE IN BATHROOMS AND JANITOR CLOSET AS SPECIFIED.
21. CERAMIC WALL TILE AS SPECIFIED.
22. NOT USED.
23. INTERIOR STOREFRONT WINDOW AS SCHEDULED BETWEEN SERVICE WRITERS.
24. 6" CFMF FUR DOWN AS DETAILED.
25. WALL OPENING ABOVE WINDOW BETWEEN SERVICE WRITERS.
26. SUSPENDED SOUND BAFFLES AS SPECIFIED, SEE REFLECTED CEILING PLAN.

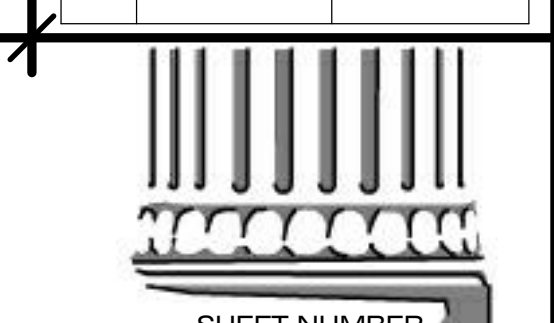


RANDY M. GOODLOE, AIA, APAC
725 KIRBY STREET
LAKE CHARLES, LOUISIANA
OFFICE: 337.436.3036
FAX: 337.436.3773
LA. LICENSE NO. 4086

NEW CONSTRUCTION
FOR
FORD PRO
MIKE WILLIS
2010 PATTON ST.

COPYRIGHT 2026,
RANDY M. GOODLOE, AIA, APAC
ALL INFORMATION, EITHER DRAWN, WRITTEN,
OR IMPLIED APPEARING IN THIS DOCUMENT
SHALL NOT BE DUPLICATED, DISCLOSED, OR
OTHERWISE USED WITHOUT THE WRITTEN
PERMISSION OF THE AUTHOR, RANDY M.
GOODLOE, AIA, APAC. THIS DOCUMENT IS AN
INSTRUMENT OF SERVICE AND IS THE SOLE
PROPERTY OF THE AUTHOR. FURTHERMORE,
THE USE OF THIS DOCUMENT FOR ANY
PURPOSE SHALL BE REVOKED, IF THE INTENT
OF THE DESIGN OR THE CONSTRUCTION
TECHNIQUES OR DETAILS SHOWN HEREIN
ARE NOT ADHERED TO OR THE
CONTRACTUAL AGREEMENT GOVERNING
THEIR USE ARE NOT STRICTLY ADHERED TO.

PROJECT NO.
25012
PROJECT MANAGER
TM
DATE ISSUED
2026.05.22
REVISED



SHEET NUMBER
A-701
INTERIOR ELEVATIONS